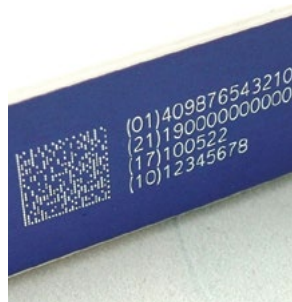
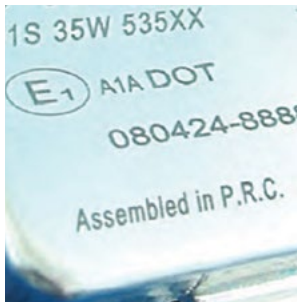


DATASHEET

eMark DL

eMark DL is our most economical laser system for permanent coding on plastics and metals. The eMark DL offers an impressive laser quality of all types including alphanumeric texts/dates/timers, serial numbers, barcodes, 2D codes, and graphics. With multiple I/O signals, it easily integrates into existing low and medium efficiency production lines, making permanent marking simple and affordable.



FEATURES

- + Vector quality codes for stationary and 'on-the-fly' operation
- + Simple local and remote control via USB, networks, and Wifi module
- + Optional upgrade to hand-held control panel with user-friendly touchscreen interface

eMark DL Technical Specifications

Laser Type	DPSS, average life time > 15,000 working hours
Wavelength	1064 nm
Electrical Requirements	230V 50Hz / 115V 60Hz
Power Consumption	75W average
I/O Signals for Installation	Shaft encoder, Interlock, File selection inputs, Product detector inputs: NPN.PNP 24V, Sensor System On-line, Marking outputs
Cooling	Air, integrated
Ambient Temperature	50–104°F (10–40°C), Suggested 69–86°F (15–30°C)
Humidity	Up to 80%, non-condensing
Enclosure Type	IP 52/NEMA 12
Weight	33 lb (15 kg)
Communication	USB/Ethernet 10 Base T
Software	SolMark II job editor for Windows 9x, NT, 2000, ME, XP, Vista
Safety	Class IV, according to EN 40825-1

Optional Equipment

- + Touchscreen WYSIWYG handheld terminal
- + Fumes/Dust Extractor (with Active carbon filter)
- + Shaft Encoder with mechanical holder and wheel
- + Product detector
- + File selection hand-switch
- + Mechanical stand for desktop operation, with Z-axis table, focusing diodes, protection shield and rotary module
- + Safety glasses

eMark DL Marking Specifications

Laser Output Power	6W
Marking Field Lens Type	LF3
Marking field (mm)	70 x 70 mm

